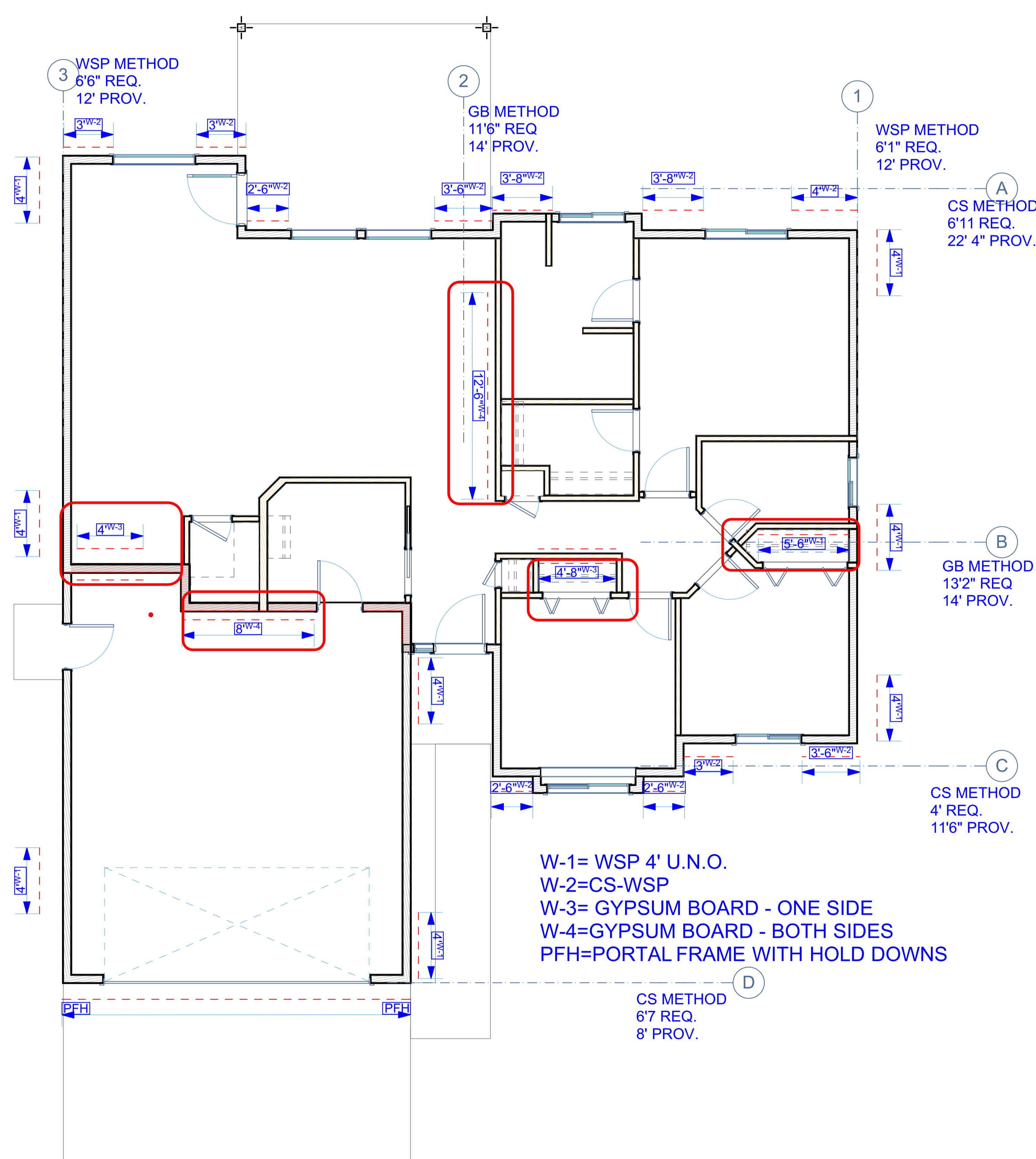


TABLE R602.3(2)  
ALTERNATE ATTACHMENTS

| NOMINAL MATERIAL THICKNESS (inches)  | DESCRIPTION <sup>a, b</sup> OF FASTENER AND LENGTH (inches) | SPACING <sup>c</sup> OF FASTENERS (inches) |                                     |
|--|---|--|-------------------------------------|
|  |   | Edges (inches)                             | Intermediate supports (inches)      |
| Wood structural panels subfloor, roof and wall sheathing to framing and particleboard wall sheathing to framing <sup>d</sup> |   |  |                                     |
| up to 1/2  | Staple 15 ga. 1 1/4   | 4  | 8                                   |
|  | 0.097 - 0.099 Nail 2 1/4                                    | 3  | 6                                   |
|  | Staple 16 ga. 1 3/4   | 3  | 6                                   |
| 19/32 and 3/4  | 0.113 Nail 2  | 3  | 6                                   |
|  | Staple 15 and 16 ga. 2                                      | 4  | 8                                   |
|  | 0.097 - 0.099 Nail 2 1/4                                    | 4  | 8                                   |
| 23/32 and 3/4  | Staple 14 ga. 2   | 4  | 8                                   |
|  | Staple 15 ga. 1 3/4   | 3  | 6                                   |
|  | 0.097 - 0.099 Nail 2 1/4                                    | 4  | 8                                   |
| 1  | Staple 16 ga. 2   | 4  | 8                                   |
|  | Staple 14 ga. 2 1/4   | 4  | 8                                   |
|  | 0.113 Nail 2 1/4  | 3  | 6                                   |
|  | Staple 15 ga. 2 1/4   | 4  | 8                                   |
| NOMINAL MATERIAL THICKNESS (inches)  | DESCRIPTION <sup>a, b</sup> OF FASTENER AND LENGTH (inches) | SPACING <sup>c</sup> OF FASTENERS (inches) |                                     |
|  |   | Edges (inches)                             | Body of panel <sup>d</sup> (inches) |
| Floor underlayment; plywood-hardboard-particleboard <sup>d</sup>   |   |  |                                     |



Bracing Table

| Wall Line | Spacing | Method | Start | BWL  | Walls | R-E | Exposure | Required | Provided |
|-----------|---------|--------|-------|------|-------|-----|----------|----------|----------|
| 1         | 29'     | WSP    | 4'11" | 1.3  | .95   | 1.0 | 1.0      | 6'1"     | 12'      |
| 2         | 29'     | GB     | 9'3"  | 1.3  | .95   | 1.0 | 1.0      | 11'6"    | 14'      |
| 3         | 28'     | WSP    | 5'3"  | 1.3  | .95   | 1.0 | 1.0      | 6'6"     | 12'      |
| A         | 30'     | CS     | 5'    | 1.45 | .95   | 1.0 | 1.0      | 6'11"    | 26'      |
| B         | 30'     | GB     | 9'6"  | 1.45 | .95   | 1.0 | 1.0      | 13'2"    | 18'      |
| C         | 14'     | CS     | 2'8"  | 1.45 | .95   | 1.0 | 1.0      | 4'       | 11'6"    |
| D         | 28'     | CS     | 4'9"  | 1.45 | .95   | 1.0 | 1.0      | 6'7"     | 8'       |

**3** 1st FLOOR SHEAR

SCALE: 1/4" = 1'-0"

This drawing must not be scaled. The contractor shall verify all levels, columns and dimensions prior to commencement of work. All errors and omissions must be reported to Lawson Design immediately.

This drawing is the exclusive property of Lawson Design and must not be reproduced without their written permission.

Client:

Commercial  
Pallesen BUILDERS Inc.  
Nampa, Idaho  
Cell: (208) 989-4365  
www.PallesenBuilders.com  
Residential  
BRIAN  
(208) 465-6139  
Fax: 465-5214

Project Title:

daughter22.pln

| Revision No. | Date | Description: |
|--------------|------|--------------|
|              |      |              |
|              |      |              |
|              |      |              |
|              |      |              |

Date: Sunday, June 21, 2020

Scale: As Shown

Drawn By: LAWSON DESIGN INC

Checked By:

Drawing Title: SHEAR

Department of Building Safety

City of Caldwell | Development Services  
621 Cleveland Blvd. Caldwell, ID 83605

City of Caldwell | Development Services  
621 Cleveland Blvd. Caldwell, ID 83605

Department of Building Safety

Plans Reviewed for Code Compliance

The issuance or granting of a permit shall not be construed to be a permit for, or an approval of, any violation of the provisions of Caldwell City Codes or any other ordinance of this jurisdiction. The issuance of a permit based on construction documents and other data shall not prevent the Building Official from requiring the correction of errors in the construction documents and other data.

These plans were not reviewed by the City of Caldwell for compliance to the American with Disabilities Act (ADA). References used were the International Building Code and ANSI A117.1.

Permit # BR20-000580      07/13/20

Drawing No: A-103

D:\OTHER CONTRACTORS\PALLESEN BUILDERS\BRIAN\BRIAN'S DAUGHTER22.pln